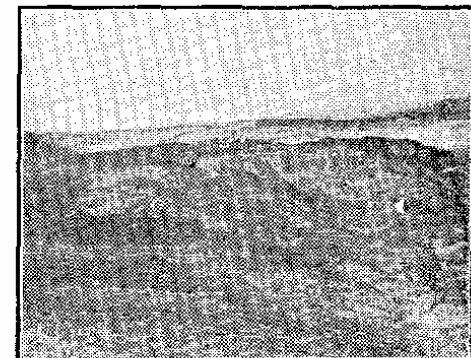
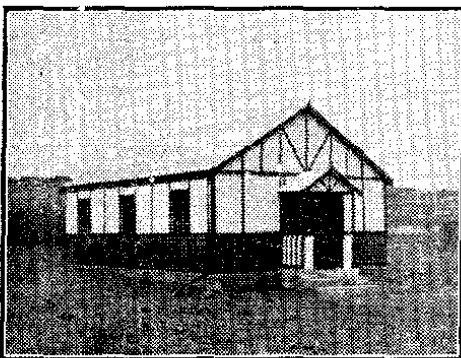
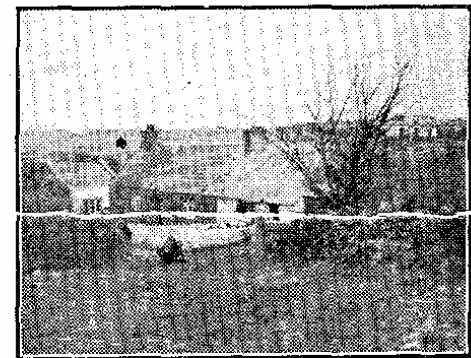
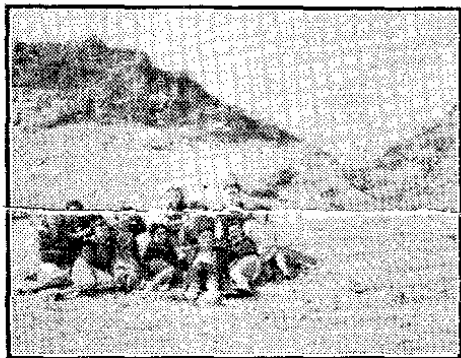
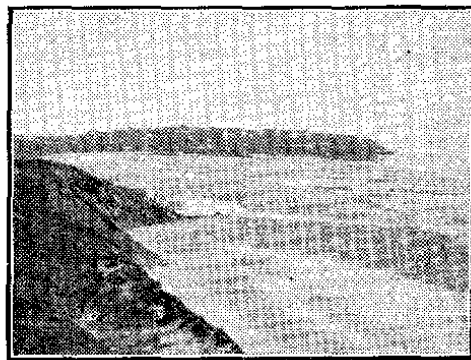
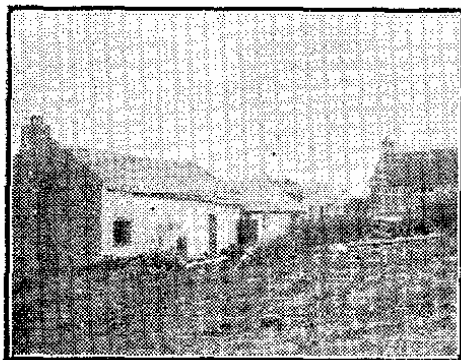


SAINT MADOC CHRISTIAN YOUTH CAMP

LLANMADOC, GOWER, SOUTH WALES.



These photographs were taken by the Rev. Donald Wenstrom and Mr. Wilbert George. They show views of the Camp Site which is 76 acres in extent, and includes a mile of the beach shown above. The Cottage and Barns were our original buildings, which we have reconditioned. The Assembly Hall seen in the bottom left-hand corner is the first of six similar buildings we are adding this year. The lower centre picture shows members of a working party building a foundation for the new Dining Hall. The man with the wheel barrow is going out to France this July with a number of young people to help in re-building one of their destroyed villages.